



ALTA
WINDOW FASHIONS
design simplified

WOOD

BLINDS

Pricing effective April 17, 2023 and supersedes all previous pricing.
Subject to change by Alta Window Fashions.

SUMMARY OF REVISIONS

3/13/23 Revisions:

Page 6. "NEW" Automation Components, 15v DC Distribution Power Panel, 12v DC Plug In Transformer

12/15/22 Revisions:

Page 6 PCN / Description Updates

11/15/22 Revisions:

Page 8 New Standard Return Lengths Chart

Page 14 4-1/2" notched valance information added

11/1/22 Revisions:

Page 5 Updated Size Specifications chart

10/15/22 Revisions:

Pages 3-5. Size Specification chart updated (Center Tilt Only)

Page 13 Square footage chart updated

Page 14 Note added to "stack-up chart"

Page 14 Square footage chart updated

Page 16 Square footage chart updated

9/15/22 Revisions:

Pages 3-5. Spec change on Cordless XL (Max Height and Width 84", max area SQ/FT 40)

Page 11 Spec change on Cordless XL (Max Height and Width 84", max area SQ/FT 40)

Page 11 Mounting Requirements update - Inside Mount depth for 2-3/8" (1-1/4")

Page 14 Spec change on Cordless XL (Max Height and Width 84", max area SQ/FT 40) & new Square Footage Charts

8/15/22 Revisions:

Page 2 Changed Hidden Gray from W2-600 to W2-601

Page 6 Changed pcn for Bliss 15 Channel Surface Mounted Wall Switch from 62109C00 to 1026657

8/1/22 Revisions:

Page 6 Bliss Charging Block changed to Charging Block 5V/2A

Page 11 Removed 1 3/8" from Mounting Requirements

7/1/22 Revisions:

Pages 12-16. "New" square footage chart

Page 14 Ladder Replacement chart updated

TABLE OF CONTENTS

Product Overview

- Color Chart..... 2

Pricing Information

- 2" Smooth Finish Price Group and Option Charges 3
- 2" Speciality Finish Price Group and Option Charges 4
- 2-3/8" Smooth Finish Price Group and Option Charges..... 5
- BLISS and Somfy Automation Surcharges..... 6

Valance Upgrade Information

- Individual Valance Ordering and Pricing..... 7
- Valance and Valance Return Information and Specifications..... 8

Solid and Decorative Tape Option and Listing..... 9

Product and Specifications

- Features and Options..... 10
- Size Specifications, Finished Dimensions and Mounting Requirements 11

Controls, Components, Ladder/Tape Placement and Stack-up Charts

- Standard 12
- Cordless Lift 13
- Cordless XL 14
- Bliss & Somfy Automation..... 15
- Cordless Lift & Lock™ 16

Product Components Guide – product components pages are now featured in a separate guide for quick reference. [Click here to view.](#)

<p>Enlarge Common Carrier Delivery</p> <p>All orders with any quantity of shades or blinds or any continuous valance 90" or more in width are considered enlarge. Therefore, a net shipping charge per oversized unit will be assessed.</p> <p>Oversized orders that require expedited shipping will be quoted and charged accordingly.</p> <p>Please see General Information for additional freight and shipping charge information.</p>
--

COLOR CHART

Wood Styles & Names	2" COLOR #	2-3/8" COLOR #
SMOOTH FINISH (paints & stains)		
Amber	W2-287	
Ashen	W2-401	
Barn Door	W2-316	
Dark Mocha	W2-295	
Eastern Cherry	W2-315	
English Walnut	W2-299	
Golden Oak	W2-124	
Hidden Gray	W2-601	
Inkwell	W2-400	
Lunar	W2-301	
Mahogany	W2-125	
Milky White*	W2-282	W238-282
Nuevo White	W2-284	
New Oak	W2-117	
Nutmeg	W2-602	
Pleasant Dream	W2-600	
Pure White	W2-026	W238-026
Rich Walnut	W2-133	
Snow White	W2-296	
Snowflake	W2-013	W238-013
Spice	W2-134	
Stewart Pecan	W2-318	
Sugar	W2-300	W238-300
Sunset Pine	W2-288	
Winter White	W2-012	W238-012

Specialty Finish		
Aged Barrel	WBR-902	
Comfort Oak	WBR-901	
Front Porch	WBR-803	
Moonshine	WBR-903	
Old Heritage	WBR-904	
Tinsmith	WBR-806	
Washed Birch	WBR-900	

*Color has changed with "April 2022" Launch.
View new sample deck.

= NOT AVAILABLE

2" SMOOTH FINISH

3" Standard Decorative Valance Included in Price

WIDTH TO:	24"	28"	32"	36"	42"	48"	54"	60"	66"	72"	78"	84"	90"	96"	102"
HEIGHT TO:															
30"	\$164	177	197	216	236	261	288	333	361	388	413	451	490	531	576
36"	176	195	215	230	261	284	315	364	391	426	460	507	537	582	630
42"	192	213	230	259	288	312	350	401	436	476	514	566	598	650	703
48"	206	227	250	276	309	331	376	436	473	513	560	616	653	709	776
54"	230	261	283	305	350	382	426	494	529	582	638	698	740	801	867
61"	249	276	306	309	375	384	458	516	572	626	689	753	804	867	943
66"	264	294	326	352	404	444	495	570	617	677	739	817	865	939	1023
73"	283	315	352	373	443	481	536	617	674	737	806	888	956	1013	
78"	300	334	372	402	455	497	580	666	722	773	850	959	1016		
84"	320	353	391	427	488	537	617	698	756	811	919	1013			
90"	334	373	414	451	507	564	650	731	786	866	957				
96"	352	391	436	481	539	596	678	765	830	910					
102"	369	409	453	495	559	616	710	813	884						
108"	405	448	495	534	596	664	756	866	945						
114"	419	467	506	551	617	688	780	898							
120"	436	494	537	581	653	722	828	942							
126"	459	509	559	616	693	765	871								

Note: Blinds over 50 sq. ft. require 2 on 1 Headrail

Refer to chart below for all min / max size specifications

OPTIONS: NO CHARGE – SPECIFY ON ORDER

- 3" Modern Valance
- Cordless XL* (wand only)
- Lights out Routeless Feature (cordlock only)
- Controls (grouped or split)
- Hold-Down Brackets
- Tile Cut out* (not available with cordless Lift & Lock or cordless XL)
- Spacer Blocks (3/8" & 3/4")
- Extensions Brackets (Long & Short)
- Cord or Wand Tilt
- Optional Wand and Cord Lengths
- 2 on 1 Headrail - price each blind separately
- Side by Side*

*Guaranteed within 1/4" when requested at the time of order.

OPTIONS: EXTRA CHARGE – SPECIFY ON ORDER

- Cordless Lift & Lock*add \$100 each
- Cordless Lift System*add \$125 each
- Solid Tape*add \$63 each
- Decorative Tape*add \$113 each
- Blinds Under 12" Wideadd \$16 each
- Keystone Valance (for blinds under 102")add \$18 each

* Not Available in the Lights Out Feature

Please see General Info. for additional freight and shipping charge information.

SIZE SPECIFICATIONS	Automation					
	2" Standard	2" Cordless	2" Cordless XL	2" Cordless Lift & Lock™	2" Bliss and Somfy Automation w/ Std Lift*	2" Bliss and Somfy Automation w/ Cordless Lift*
Minimum Width (Center Tilt Only)	8"	N/A	8" - 18"	N/A	N/A	N/A
Minimum Width (Net)	8"	18"	18-1/8"	10-1/2"	20"	20"
Maximum Width (One blind)	102"	78"	84"	96"	96"	78"
Minimum Height (Solid or Decorative Tape)	12"	N/A	N/A	N/A	12"	N/A
Minimum Height	12"	12"	18-1/2"	12"	12"	12"
Maximum Height	126"	84"	84"	84"	96"	84"
Max. AREA (SQ/FT)	50 sq/ft	45 sq/ft	40 sq/ft	45 sq/ft	50 sq/ft	45 sq/ft
Maximum Width 2 on 1 Headrail	120"	N/A	N/A	120"	N/A	N/A
Maximum Continuous Valance Width (not spliced)	102"					

Blinds over Max SQ/FT require 2 on 1 headrail (where available)

*Automation is not available with Cordless Lift &

2" SPECIALITY FINISHES

3" Modern Valance Included in Price

WIDTH TO:	24"	28"	32"	36"	42"	48"	54"	60"	66"	72"	78"	84"	90"	96"	102"
HEIGHT TO:															
30"	\$178	194	217	235	261	286	322	368	397	432	469	514	545	585	638
36"	191	214	234	257	287	315	346	407	435	476	516	564	600	649	702
42"	213	234	257	284	318	346	390	448	486	532	577	639	677	734	789
48"	226	251	278	306	345	376	419	490	529	581	629	698	742	801	871
54"	259	285	318	350	390	430	479	555	598	658	713	791	834	903	980
61"	273	304	341	374	419	460	516	596	647	713	773	859	903	980	1065
66"	291	329	365	401	453	500	560	643	697	763	834	927	980	1074	1164
73"	317	352	395	430	491	539	606	699	765	838	922	1011	1080	1171	
78"	338	372	413	454	514	561	654	753	813	880	955	1091	1160		
84"	352	396	445	483	546	605	700	793	863	927	1022	1153			
90"	374	414	465	511	577	638	735	830	897	992	1052				
96"	393	444	492	542	615	677	773	871	958	1043					
102"	411	460	515	558	638	700	812	918	998						
108"	453	504	560	600	680	750	861	978	1071						
114"	469	525	577	621	702	777	890	1016							
120"	492	549	605	655	745	824	940	1043							
126"	515	575	629	697	788	867	1008								

Note: Blinds over 50 sq. ft. require 2 on 1 Headrail

Refer to chart below for all min / max size specifications

OPTIONS: NO CHARGE – SPECIFY ON ORDER

- Cordless XL* (wand only)
- Lights out Routeless Feature (cordlock only)
- Controls (grouped or split)
- Hold-Down Brackets
- Tile Cut out* (not available with cordless Lift & Lock or cordless XL)
- Spacer Blocks (3/8" & 3/4")
- Extensions Brackets (Long & Short)
- Cord or Wand Tilt
- Optional Wand and Cord Lengths
- 2 on 1 Headrail - price each blind separately
- Side by Side*

*Guaranteed within 1/4" when requested at the time of order.

SURCHARGE OPTIONS - SPECIFY ON ORDER (ADD COST TO BLIND)

- Cordless Lift & Lock*add \$100 each
- Cordless Lift System*add \$125 each
- Solid Tape*add \$63 each
- Decorative Tape*add \$113 each
- Blinds Under 12" Wideadd \$16 each
- Keystone Valance (for blinds under 102").....add \$18 each

* Not Available in the Lights Out Feature

Please see General Info. for additional freight and shipping charge information.

SIZE SPECIFICATIONS	Automation					
	2" Standard	2" Cordless	2" Cordless XL	2" Cordless Lift & Lock™	2" Bliss and Somfy Automation w/ Std Lift*	2" Bliss and Somfy Automation w/ Cordless Lift*
Minimum Width (Center Tilt Only)	8"	N/A	8" - 18"	N/A	N/A	N/A
Minimum Width (Net)	8"	18"	18-1/8"	10-1/2"	20"	20"
Maximum Width (One blind)	102"	78"	84"	96"	96"	78"
Minimum Height (Solid or Decorative Tape)	12"	N/A	N/A	N/A	12"	N/A
Minimum Height	12"	12"	18-1/2"	12"	12"	12"
Maximum Height	126"	84"	84"	84"	96"	84"
Max. AREA (SQ/FT)	50 sq/ft	45 sq/ft	40 sq/ft	45 sq/ft	50 sq/ft	45 sq/ft
Maximum Width 2 on 1 Headrail	120"	N/A	N/A	120"	N/A	N/A
Maximum Continuous Valance Width (not spliced)	102"					

Blinds over Max SQ/FT require 2 on 1 headrail (where available)

*Automation is not available with Cordless Lift &

2-3/8" SMOOTH FINISH

3" Modern Valance Included in Price

WIDTH TO:	24"	28"	32"	36"	42"	48"	54"	60"	66"	72"	78"	84"	90"	96"	102"
HEIGHT TO:															
30"	\$168	181	206	224	246	270	301	345	374	408	444	485	514	550	598
36"	180	202	223	241	271	296	327	384	411	447	489	534	563	611	662
42"	199	223	241	268	299	327	369	423	459	501	543	600	639	691	745
48"	213	235	261	287	326	353	396	461	499	546	594	655	699	751	818
54"	242	269	299	331	369	404	449	524	562	619	670	746	788	851	923
61"	259	286	322	352	396	433	489	561	608	670	731	808	851	923	1005
66"	273	308	342	378	426	469	528	605	654	720	788	872	923	1010	1098
73"	298	333	372	404	462	507	573	658	721	791	867	953	1015	1104	
78"	317	350	389	428	485	529	617	707	765	829	900	1027	1091		
84"	333	373	416	455	515	572	659	750	812	872	962	1085			
90"	352	389	439	482	543	598	693	783	848	936	991				
96"	370	415	465	511	578	639	731	818	903	982					
102"	388	433	486	525	598	659	763	863	940						
108"	426	476	528	563	642	704	811	922	1008						
114"	444	492	543	585	662	733	838	955							
120"	465	516	572	618	700	776	888	982							
126"	486	542	594	654	744	815	951								

Note: Blinds over 50 sq. ft. require 2 on 1 Headrail

Refer to chart below for all min / max size specifications

OPTIONS: NO CHARGE – SPECIFY ON ORDER

- 3" Modern Valance
 - Cordless XL* (wand only)
 - Lights out Routeless Feature (cordlock only)
 - Controls (grouped or split)
 - Hold-Down Brackets
 - Tile Cut out* (not available with cordless Lift & Lock or cordless XL)
 - Spacer Blocks (3/8" & 3/4")
 - Extensions Brackets (Long & Short)
 - Cord or Wand Tilt
 - Optional Wand and Cord Lengths
 - 2 on 1 Headrail - price each blind separately
 - Side by Side*
- *Guaranteed within 1/4" when requested at the time of order.

SURCHARGE OPTIONS - SPECIFY ON ORDER (ADD COST TO BLIND)

- Cordless Lift & Lock*add \$100 each
- Cordless Lift System*add \$125 each
- Solid Tape*add \$63 each
- Decorative Tape*add \$113 each
- Blinds Under 12" Wideadd \$16 each
- Keystone Valance (for blinds under 102")add \$18 each

* Not Available in the Lights Out Feature

Please see General Info. for additional freight and shipping charge information.

SIZE SPECIFICATIONS	Automation					
	2-3/8" Standard	2-3/8" Cordless	2-3/8" Cordless Cordless XL	2-3/8" Cordless Lift & Lock™	2-3/8" Bliss and Somfy Automation w/ Std Lift*	2-3/8" Bliss and Somfy Automation w/ Cordless Lift*
Minimum Width (Center Tilt Only)	12"	N/A	8" - 18"	N/A	N/A	N/A
Minimum Width (Net)	12"	18"	18-1/8"	10-1/2"	20"	20"
Maximum Width (One blind)	102"	78"	84"	96"	96"	78"
Minimum Height (Solid or Decorative Tape)	12"	N/A	N/A	N/A	22"	N/A
Minimum Height	12"	12"	18-1/2"	12"	12"	12"
Maximum Height	126"	84"	84"	84"	96"	84"
Max. AREA (SQ/FT)	50 sq/ft	45 sq/ft	40 sq/ft	50 sq/ft	50 sq/ft	45 sq/ft
- Blinds over 50 SQ/FT require 2 on 1 headrail						
Maximum Width 2 on 1 Headrail	120"	N/A	N/A	120"	N/A	N/A
Maximum continuous valance width (not spliced)	102"					

Blinds over Max SQ/FT require 2 on 1 headrail (where available)

*Automation is not available with Cordless Lift &



The Automation cost factor is different from blinds/shades. If you need to access your cost factor, refer to page 4 in the General Information Guide.

BLISS AUTOMATION OPTIONS: EXTRA CHARGE – SPECIFY ON ORDER

MOTORIZATION		
• BLISS™ Tilt DC.....	Part #62008000	add \$210 per blind
• BLISS™ External Battery Pack	Part #62203300	add \$90 each
• BLISS™ Solar Panel	Part #62201000	add \$120 each
• Plug In Charger Kit.....	Part #1027720	add \$30 each
• BLISS™ 15 Channel Remote	Part #1026655	add \$50 each
• BLISS™ Wall Switch	Part #1026657	add \$50 each
• 8" Charger Extension	Part #62206700	add \$6 each
• 48" Charger Extension	Part #62206800	add \$10 each
• Magnetic Charging Kit	Part #1026665	add \$40 each
• BLISS™ Magnetic Charging Kit - 90 Degree.....	Part #1027769	add \$40 each
• BLISS™ Magnetic Charging Tip.....	Part #62206200	add \$6 each
• 15v DC Distribution Power panel - 18 motor (Panel + power cord).....	Part #103730, Part #1037301	add \$500 each
• 12v DC Plug In Transformer.....	Part #6229000	add \$40 each
• BLISS™ Bridge	Part #1026654	add \$100 each
• Charging Block 5V/2A	Part #62200000	add \$10 each
• 48" Battery Pack Extension.....	Part #62207000	add \$6 each

SOMFY AUTOMATION OPTIONS: EXTRA CHARGE – SPECIFY ON ORDER (must select RF when ordering)

MOTORIZATION		
• Tilt Only 50 WireFree™ RTS.....	Part #1021803	add \$260 per blind
• Situ@ 1 RTS	Part #1019536	add \$60 each
• Situ@ 5 RTS	Part #1019537	add \$84 each
• Telis 1 Chronis Remote	Part #1805237A.....	add \$330 each
• Smooove@ 1 RTS Wall Switch, Pure	Part #1811533	add \$120 each
• Smooove@ 4 RTS Wall Switch.....	Part #1019538	add \$120 each
• Silver Wall Switch Frame	Part #9015025	add \$24 each
• Black Wall Switch Frame	Part #9015023	add \$24 each
• Decoflex WireFree™ RTS - 1 Channel, White	Part #1810897	add \$100 each
• Decoflex WireFree™ RTS - 5 Channel, White.....	Part #1810813	add \$100 each
• Rechargeable Battery Pack.....	Part #1019535	add \$100 each
• Lithium-ion Charger	Part #9025166	add \$30 each
• WireFree™ Li-ion Solar panel Kit	Part #1026827	add \$160 each
• 12v DC Power Supply	Part #1822445	add \$140 each
• Reloadable Single Battery Wand (empty tube).....	Part #RC445268	add \$36 each
• Reloadable Dual Battery Wand (empty tube).....	Part #KITRDWR	add \$86 each
• 10" Battery Pack Extension	Part #9018623	add \$12 each
• 48" Battery Pack Extension	Part #9016736	add \$12 each
• 96" Battery Pack Extension.....	Part #9018624	add \$18 each
• 8" Charger Extension	Part #9021131	add \$12 each
• 95" Charger Extension	Part #9021016	add \$12 each
• TaHoma Wi-Fi Interface and App	Part #1031856	add \$300 each
• RTS Repeater	Part #1810791	add \$300 each
• TaHoma Ethernet Adaptor	Part #1031853	add \$40 each

Notes: When ordering multiple motorized shades/remotes, please provide programming instructions. Otherwise, all shades will be programmed to one remote. Automation systems require a REMOTE CONTROL unit. The quantity of remote control units must be specified when ordering. Somfy Automation requires both a remote and power supply. Please specify when ordering.

INDIVIDUAL VALANCE ORDERING & PRICING

2" & 2-1/2" WOOD COLOR NAMES	Color Number	
	3" Modern	3" Standard Decorative
Aged Barrel	902	•
Amber	287	• •
Ashen	401	• •
Barn Door	316	• •
Comfort Oak	901	•
Dark Mocha	295	• •
Eastern Cherry	315	• •
English Walnut	299	• •
Front Porch	803	•
Golden Oak	124	• •
Hidden Gray	601	• •
Lunar	301	• •
Mahogany	125	• •
Milky White	282	• •
Moonshine	903	•
Neuvo White	284	• •
New Oak	117	• •
Nutmeg	602	• •
Old Heritage	904	•
Pleasant Dream	600	• •
Pure White	026	• •
Raven	400	• •
Rich Walnut	133	• •
Snow White	296	• •
Snowflake	013	• •
Spice	134	• •
Stewart Pecan	318	• •
Sugar	300	• •
Sunset Pine	288	• •
Tinsmith	806	•
Washed Birch	900	•
Winter White	012	• •



Standard Decorative - 3" Profile
• Standard on all Smooth Finishes



Modern Valance - 3" Profile
• Standard on all Specialty Finishes
• Optional for all styles

INDIVIDUAL VALANCE PRICING

WIDTH TO:	24"	28"	32"	36"	42"	48"	54"	60"	66"	72"	78"	84"	90"	96"	102"	108"	114"	120"	144"	168"
3" Std Deco, Crescent, M	\$30	30	30	30	47	47	47	47	63	63	63	63	76	76	76	98	98	98	126	154

NOTE: The maximum continuous valance width is 102". Valances over the maximum width will be spliced in the center.

KEYSTONE VALANCE OPTION

Keystones

Designed to cover splices in oversized valances. Use as a decorative look over any blind.

Valances under 102"

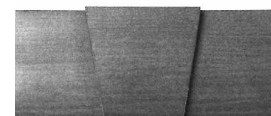
A color matched Keystone may be ordered with a valance. The valance will come assembled with the Keystone position in the center of valance.

Valances over 102"

A color matched Keystone will be included at no charge. Will require assembly.

Notes:

The addition of a keystone will not affect the overall width of the valance.
The color of the keystone will match valance.



VALANCE AND VALANCE RETURN INFORMATION AND SPECIFICATIONS

VALANCE ORDERING

Outside Mount	1" Added to valance, measured inside returns
Inside Mount	-1/8" (no returns)
Max Un-Spliced	102"
Max Spliced	168"* (Minimum 2 splices)

Notes:

- Valances are cut to measure inside miter to ensure the most accurate fit when installed over the headrail or window frame.

RETURN LENGTHS

Inside Mount Blind		3" Valance Standard Decorative • Modern	
		Minimum	Maximum
Cordless XL	2" Wood	1/2"	6"
	2-3/8" Wood*	3/4"	6"
Cordlock, Cordless Lift & Cordless Lift & Lock™	2" Wood	1/2"	6"
	2-3/8" Wood*	1/2"	6"

Outside Mount Blind		Minimum	Maximum
Cordless XL	2" Wood	3"	6"
	2-3/8" Wood*	3-5/8"	6"
Cordlock, Cordless Lift & Cordless Lift & Lock™	2" Wood	3"	6"
	2-3/8" Wood*	3-3/8"	6"

**All valance profiles will be notched for better clearance. Please refer to page 14 for an example of how valance is notched.*

Notes: All valance profiles utilize magnetic valance clips. The magnetic valance clips have a projection adjustment feature. By pulling the clips outward, they can provide an additional 1/4" projection.

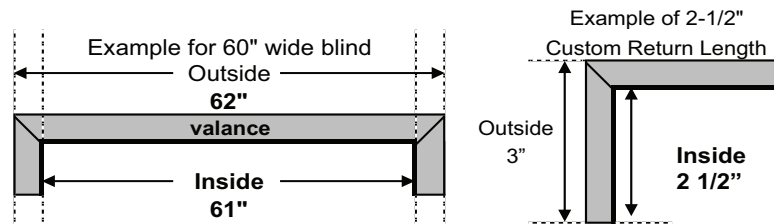
ADJUSTED RETURN LENGTHS WITH SPACER BLOCKS & EXTENSION BRACKETS

3/8" Spacer Blocks (Small)	3-3/8"
3/4" Spacer Blocks (Large)	3-3/4"
3-7/8" Extension Brackets (Short)	4-1/4"
5-7/8" Extension Brackets (Long)	6-1/4"

Notes:

- *3" Return Lengths are factory adjusted when extension brackets or (1 set of) spacer blocks are ordered.

CUSTOM VALANCE RETURNS & RETURNS - MEASURED & CUT FROM THE INSIDE:



Order Configuration	How Valance Will Be Produced	
RETURN LENGTH OVERRIDE	IB	1" Wider than ordered size
	OB	1" Wider than ordered size (no change from standard)
	NET (available for Valance only orders)	With Returns- exact, inside return to return No Returns - Exact
CONTINUOUS	IB	Valance will be exact size of continuous valance measurement
	OB	Inside return to return valance will be exact ordered width
	NET (available for Valance only orders)	With Returns- exact, inside return to return No Returns - Exact
CONTINUOUS with RETURN LENGTH OVERRIDE	IB	1" Wider than ordered size
	OB	Inside return to return valance will be exact ordered width
	NET (available for Valance only orders)	With Returns- exact, inside return to return No Returns - Exact

SOLID AND DECORATIVE TAPES

TAPES



TAPE SPECIFICATIONS

- Made from a poly/cotton blend
- Resists fading or shrinking
- Lifetime Guarantee
- Decorative tapes are attached to a solid colored tape ladder. This ladder is slightly narrower than the width of the decorative ladder.
- The solid colored ladder is pre-selected. (see chart below)
- An adhesive is used to attach the decorative tape.
- The decorative tape is only applied to the ladder on the front of the blind. The back of the blind will have a solid color tape visible.

Solid Tapes

1-1/2" Solid Tape	Color Number
Alabaster	8113
Black	8899
Chocolate	8376
Dark Beige	8323
Dark Gray	8850
Light Beige	8322
Light Gray	8861
Pecan	8334
Steel	8867
Taupe	8302
White	8100

Decorative Tapes

1-1/2" Deco Tape	Color Number	Attached To
Dublin	6200	Alabaster
Hampton White	9000	White
Ivory Accent	911	Alabaster
Knit Canvas	4300	Alabaster
Knit Gray	4302	Light Gray
Knit Taupe	4301	Taupe
White Accent	910	White
1-1/4" Deco Tape	Color Number	Attached To
Stonewash Cocoa	5003	Light Beige
Stonewash Espresso	5005	Chocolate
Stonewash Gray	5002	Alabaster
Stonewash Khaki	5001	Alabaster

Solid and Decorative Tapes are not available with:

- LightsOut Routeless Feature
- Cordless Lift
- Cordless XL
- Cordless Lift & Lock™

PRODUCT SPECIFICATIONS

FEATURES	2" Smooth	2" Speciality	2-3/8"
# of Colors	25	7	5
Headrail Size	1-1/2" x 2-1/4"	1-1/2" x 2-1/4"	1-1/2" x 2-1/4"
Headrail Gauge	.024	.024	.024
Bracket Style	Box	Box	Box
Bottomrail - Standard / Cordless Lift / Cordless XL	Trapezoid	Trapezoid	Trapezoid
Bottomrail - Cordless Lift & Lock!	Vinyl	Vinyl	Vinyl
Ladder Space Between Slats	44 mm	44 mm	54 mm
Wand Tilt	Yes	Yes	Yes
Decorative Valance	Yes – 3"	Yes – 3"	Yes – 3"
Valance Return Lengths (standard for OB mounts)	3"	3"	3-3/8"
Magnetic Valance Attachment System	Yes	Yes	Yes
Decorative Wood Tassel	Yes	Yes	Yes
Break-Away Stop Ball - not required with Cordless Lift Cordless XL Cordless Lift & Lock™	Yes	Yes	Yes
Warranty (Tilt motor systems are warranted for 5 years)	Lifetime Limited	Lifetime Limited	Lifetime Limited

OPTIONS AND UPGRADES	2" Smooth	2" Speciality	2-3/8"
Cordless Lift - not available with tapes LightsOut Routeless feature	Yes	Yes	Yes
Cordless XL - not available with tapes LightsOut Routeless feature	Yes	Yes	Yes
Cordless Lift & Lock™ - not available with tapes LightsOut Routeless feature	Yes	Yes	Yes
Bliss and Somfy Automation System - not available with Cordless Lift & Lock™ & Cordless XL	Yes	Yes	Yes
Cordless Lift System PLUS Automation System	Yes	Yes	Yes
LightsOut Routeless Slats1 - not available with tapes Cordless Lift Cordless XL Cordless Lift & Lock™	Yes	Yes	Yes
2 On 1 Headrail2	Yes	Yes	Yes
Tapes - not available with Cordless Lift Cordless XL Cordless Lift & Lock™ Lightsout	Yes	Yes	Yes
Modern Valance	Yes	Yes	Yes
Keystone Valance	Yes	Yes	Yes

CONTROL/MOUNTING OPTIONS	2" Smooth	2" Speciality	2-3/8"
Cord Tilt (single blind)	Yes	Yes	Yes
Control Positions (single blind)	LR, RL or Grouped	LR, RL or Grouped	LR, RL or Grouped
Tilt Control Position – Cordless Lift	L (only)	L (only)	L (only)
Tilt Control Position – Cordless XL	L or R (Wand only) Under 12" net - center tilt only	L or R (Wand only) Under 12" net - center tilt only	L or R (Wand only) Under 12" net - center tilt only
Tilt Control Position – Cordless Lift & Lock™ (single blind)	L or R	L or R	L or R
Lift Control Position – Bliss and Somfy Automation Tilt (Motor will be on opposite side)	L or R	L or R	L or R
Tile Cut-out(s) - not available with cordless Lift & Lock™ & cordless XL	Yes	Yes	Yes
Spacer Blocks (3/8" and 3/4" Depths)	Yes	Yes	3/8" Standard
Extension Brackets (Short & Long)	Yes	Yes	Yes
Hold-down Brackets - not available with 2-3/8" cordless Lift & Lock™ & Cordless XL	Yes	Yes	Yes

2 on 1 Cordlock with Wand Tilt	Width (NET)	RIGHT BLIND	
		LIFT CORD	LIFT CORD
	8" to 11-7/8"	n/a	n/a
	12" to 18"	L (only)	R (only)
	18-1/8" or more	L (only)	R (only)
2 on 1 Cordlock with Cord Tilt	Width (NET)	RIGHT BLIND	
		LIFT CORD	LIFT CORD
	8" to 11-7/8"	N/A	N/A
	12" to 18"	N/A	N/A
	18-1/8" or more	L (only)	R (only)
2 on 1 Lift & Lock with Wand Tilt	Width (NET)	Right Blind	
		WAND TILT	
	10-1/2" to 12-3/8"	C (only)	
	12-1/2" or more	L or R	
2 on 1 Lift & Lock with Cord Tilt	Width (NET)	Right Blind	
		CORD TILT	
	10-1/2" to 12-3/8"	C (only)	
	12-1/2" or more	R (only)	

FOOTNOTES (FEATURES & SPECIFICATIONS)
¹ The LightsOut configuration may cause slight "puckering" on the front of the blind when the slats are tilted backwards (reverse tilt) due to the use of interlacing cords on the front (the back uses looped ladders). A gentle tug down on the lift cord tassel will eliminate any puckering.
The slats on LightsOut routeless blinds feature notches in the slat instead of route holes. Regardless of blind size, there will be notches in the front and rear of the slat on the far right and far left ladders only, approximately 6" in from the end of the slat.
² There will be a 1/2" maximum light gap between multiple blinds on 1 headrail. 2 on 1 headrail not available with the Automation upgrades.
Wood tone blinds will include Antique Brass tape clamps and White/Neutral tone blinds will include White tape clamps on the bottomrail.

SIZE SPECIFICATIONS

SIZE SPECIFICATIONS	2" Standard	2" Cordless	2" Cordless XL	2" Cordless Lift & Lock™	Automation	
					2" Bliss and Somfy Automation w/ Std Lift*	2" Bliss Home and Somfy Automation w/ Cordless Lift*
Minimum Width (Net)	8" 12" with Tapes	18" Tapes N/A	8" - 18" (Tilt Only No Lift) 18-1/8" Tapes N/A	10-1/2" Tapes N/A	20" 22" with Tapes	20" Tapes N/A
Maximum Width (One blind)	102"	78"	84"	96"	96"	78"
Minimum Height	12"	12"	18-1/2"	12"	12"	12"
Maximum Height	126"	84"	84"	84"	96"	84"
Max. AREA (SQ/FT)	50 sq/ft	45 sq/ft	40 sq/ft	45 sq/ft	50 sq/ft	45 sq/ft
Maximum Width 2 on 1 Headrail	120"	N/A	N/A	120"	N/A	N/A
Maximum Continuous Valance Width (not spliced)	102"					

SIZE SPECIFICATIONS	2-3/8" Standard	2-3/8" Cordless	2-3/8" Cordless Cordless XL	2-3/8" Cordless Lift & Lock™	Automation	
					2-3/8" Bliss and Somfy Automation w/ Std Lift*	2-3/8" Bliss and Somfy Automation w/ Cordless Lift*
Minimum Width (Net)	12" 12" with Tapes	18" Tapes N/A	8" - 18" (Tilt Only No Lift) 18-1/8" Tapes N/A	10-1/2" Tapes N/A	20" 22" with Tapes	20" Tapes N/A
Maximum Width (One blind)	102"	78"	84"	96"	96"	78"
Minimum Height	12"	12"	18-1/2"	12"	12"	12"
Maximum Height	126"	84"	84"	84"	96"	84"
Max. AREA (SQ/FT) <small>- Blinds over 50 SQ/FT require 2 on 1 headrail</small>	50 sq/ft	45 sq/ft	40 sq/ft	50 sq/ft	50 sq/ft	45 sq/ft
Maximum Width 2 on 1 Headrail	120"	N/A	N/A	120"	N/A	N/A
Maximum continuous valance width (not spliced)	102"					

*Automation is not available with Cordless Lift & Lock™ and Cordless XL

FOOTNOTE
1 The headrail width has a 1/4" deduction on outside mounts and 3/4" deduction on inside mounts to accommodate the installation brackets.

FINISHED DIMENSIONS

Adjustments are taken from ordered dimensions and may vary slightly.

Inside (IB) Mount	
Headrail width ¹	- 3/4"
Blind width	- 1/2"
Blind height	ordered height
Valance	- 1/8"
Outside (OB) Mount	
Headrail width ¹	- 1/4"
Blind width	ordered width
Blind height	ordered height
Valance (measured from inside corners)	+ 1"
2 on 1 Headrail	
Gap between panels	- 1/2"

FOOTNOTE
1 The headrail width has a 1/4" deduction on outside mounts and 3/4" deduction on inside mounts to accommodate the installation brackets.

MOUNTING REQUIREMENTS

Use a metal tape measure for all measurements.

Inside (IB) Mount	
Minimum mounting depth - 2"	1-1/8"
Minimum mounting depth - 2-3/8"	1-1/4"
Minimum mounting depth, flush mount - 2":	3-1/2"
Minimum mounting depth, flush mount - 2-3/8":	3-3/4"
Outside (OB) Mount	
Minimum flat vertical surface	1-3/4"

CONTROL CHARTS / COMPONENTS – STANDARD

TILT WAND (STANDARD)

- Wood tilt wands are **color coordinated** with slats
- Chart shows standard lengths.
- Tilt Length Override – specify length when ordering

Wand Length	Blind Height
12"	12" to 24"
20"	24 1/8" to 36"
24"	36 1/8" to 48"
36"	48 1/8" to 72"
48"	72 1/8" to 96"

Wood Wands up to 48" long. Clear plastic in 60", 72", 84". Wand length optional. Specify optional lengths when ordering.

TILT CORD (OPTIONAL)

- Cords are **color-coordinated** with slats
- Standard tilt cord lengths are 40% of the blind height as required by child safety standards. Customized lengths are available upon request.
 - For 2" blinds, minimum cord length is 10". For blinds under 15" in height, a cord length override to at least 10" must be requested.
 - For 2-3/8" blinds, minimum cord length is 10". For blinds under 24-3/4" in height, a cord length override to at least 10" must be requested.
- For motorized tilt blinds the tilt function is controlled by remote unit

CONTROL POSITIONS:	Min. Width (NET)
Tilt Cord center and no Lift Cord*	Under 12"
Tilt Cord left / Lift Cord right (standard)	12"
Lift Cord left / Tilt Cord right	12"
Tilt & Lift Cords <i>grouped left</i>	18-1/8"
Tilt & Lift Cords <i>grouped right</i>	18-1/8"

* Available on 2" blinds only

Lift Cord Control – Standard lift cord length is 40% of the blind height as required by child safety standards. Customized lengths are available upon request.

LADDER / TAPE PLACEMENT CHARTS

The following charts show the number of ladders and routes based on the NET width of the blind.

2" WOOD		
Blind Width	# of Ladders	# of Routes
8" - 36"	2	2
36 1/8" - 56 1/4"	3	2
56 3/8" - 78 1/4"	4	4
78 3/8" - 100 1/4"	5	4
100 3/8" - 102"	6	4

2-3/8" WOOD		
Blind Width	# of Ladders	# of Routes
8" - 36"	2	2
36 1/8" - 52"	3	2
52 1/8" - 72"	4	4
72 1/8" - 92"	5	4
92 1/8" - 102"	6	4

**Routes are positioned approximately 2" from the end of the slat for blinds less than 12" wide, 3-3/4" from the end of the slat for blinds less than 18" wide, and 6 1/4" from the end of the slat for all others. Blinds with motorization have routes 6-5/8" from end of slat.

STACK-UP CHART (APPROXIMATE)

- $Headrail + Bottomrail = 2-1/2"$

The following charts show the stacking height of the slats when the blind is fully raised. **Add in HR+BR for total.**

2" WOOD	
+ 2 1/2"	
Blind Height	Stack Height
48"	4"
60"	5"
72"	6"
84"	7"
96"	8"

2-3/8" WOOD	
+ 2 1/2"	
Blind Height	Stack Height
48"	3 1/8"
60"	3 7/8"
72"	4 5/8"
84"	5 3/8"
96"	6 1/4"

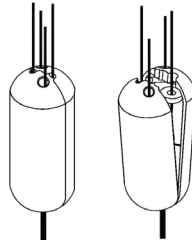
PLUS 2-1/2"

PLUS 2-1/2"

BREAK-AWAY STOP BALL

- Stop balls are standard for ALL lift cords.

The stop ball separates under pressure. It easily snaps together again.



BOTTOMRAIL

- Trapezoid bottomrails are standard on wood blinds

The "trapezoid" bottomrail provides a contoured, modern look along with improved blind operation (slat tilting & rotating). It also accommodates a smaller flat 1" tape clamp when solid or decorative tapes are ordered.



NOTE: Wood tone blinds will include Antique Brass Tape Clamps and White/Neutral tone blinds will include White Tape Clamps on the bottomrail.

SQUARE FOOTAGE SPECIFICATIONS

		2" WOOD															
		24	28	32	36	42	48	54	60	66	72	78	84	90	96		
WIDTH TO:	HEIGHT TO:																
30	30	5	6	7	8	9	10	11	13	14	15	16	18	19	20	N/A	N/A
36	36	6	7	8	9	11	12	14	15	17	18	20	21	23	24	N/A	N/A
42	42	7	8	9	11	12	14	16	18	19	21	23	25	26	28	N/A	N/A
48	48	8	9	11	12	14	16	18	20	22	24	26	28	30	32	N/A	N/A
54	54	9	11	12	14	16	18	20	23	25	27	29	32	34	36	N/A	N/A
61	61	10	12	14	15	18	20	23	25	28	31	33	36	38	41	N/A	N/A
66	66	11	13	15	17	19	22	25	28	30	33	36	39	41	44	N/A	N/A
73	73	12	14	16	18	21	24	27	30	33	37	40	43	46	49	N/A	N/A
78	78	13	15	17	20	23	26	29	33	36	39	42	46	49	N/A	N/A	N/A
84	84	14	16	19	21	25	28	32	35	39	42	46	49	N/A	N/A	N/A	N/A
90	90	15	18	20	23	26	30	34	38	41	45	49	N/A	N/A	N/A	N/A	N/A
96	96	16	19	21	24	28	32	36	40	44	48	N/A	N/A	N/A	N/A	N/A	N/A

Max Square Footage 50

		2-3/8" WOOD															
		24	28	32	36	42	48	54	60	66	72	78	84	90	96		
WIDTH TO:	HEIGHT TO:																
30	30	5	6	7	8	9	10	11	13	14	15	16	18	19	20	N/A	N/A
36	36	6	7	8	9	11	12	14	15	17	18	20	21	23	24	N/A	N/A
42	42	7	8	9	11	12	14	16	18	19	21	23	25	26	28	N/A	N/A
48	48	8	9	11	12	14	16	18	20	22	24	26	28	30	32	N/A	N/A
54	54	9	11	12	14	16	18	20	23	25	27	29	32	34	36	N/A	N/A
61	61	10	12	14	15	18	20	23	25	28	31	33	36	38	41	N/A	N/A
66	66	11	13	15	17	19	22	25	28	30	33	36	39	41	44	N/A	N/A
73	73	12	14	16	18	21	24	27	30	33	37	40	43	46	49	N/A	N/A
78	78	13	15	17	20	23	26	29	33	36	39	42	46	49	N/A	N/A	N/A
84	84	14	16	19	21	25	28	32	35	39	42	46	49	N/A	N/A	N/A	N/A
90	90	15	18	20	23	26	30	34	38	41	45	49	N/A	N/A	N/A	N/A	N/A
96	96	16	19	21	24	28	32	36	40	44	48	N/A	N/A	N/A	N/A	N/A	N/A

Max Square Footage 50

CONTROL CHARTS – CORDLESS

CONTROLS

- Tilt cords are **color coordinated** with slats
- Standard tilt cord lengths are 40% of the blind height as required by child safety standards. Customized lengths are available upon request.
 - For 2" blinds, minimum cord length is 10". For blinds under 15" in height, a cord length override to at least 10" must be requested.
 - For 2-3/8" blinds, minimum cord length is 10". For blinds under 24-3/4" in height, a cord length override to at least 10" must be requested.
- LIFT** function is controlled from the bottom rail

TILT CONTROL POSITIONS - LEFT ONLY

Tilt Wand (Standard), Tilt Cords (Optional) or Motorization (Optional)

Min. Width
18"
20" with motorized Tilt

LADDER PLACEMENT CHARTS

The following charts show the number of ladders and routes based on the NET width of the blind.

2" WOOD		
Blind Width	# of Ladders	# of Routes
18" - 38-1/8"	2	2
38-1/4" - 60-1/8"	3	2
60-1/4" - 78"	4	4

2-3/8" WOOD		
Blind Width	# of Ladders	# of Routes
18" - 36"	2	2
36-1/8" - 60-1/8"	3	2
60-1/4" - 78"	4	4

**Routes are positioned approximately 6 1/4" from the end of the slat for blinds less than 38 1/4" wide, and 8 1/4" from the end of the slat for all others, and 6-5/8" for blinds with motorization

STACK-UP CHART (APPROXIMATE)

The following charts show the stacking height of the slats when the blind is fully raised. **Add in HR+BR for total.**

- Headrail+Bottomrail = 2-1/2"

2" WOOD	
Blind Height	Stack Height
48"	4"
60"	5"
72"	6"
84"	7"

2-3/8" WOOD	
Blind Height	Stack Height
48"	3 1/8"
60"	3 7/8"
72"	4 5/8"
84"	5 3/8"

PLUS	2-1/2"
-------------	---------------

PLUS	2-1/2"
-------------	---------------

SQUARE FOOTAGE SPECIFICATIONS

2" & 2-3/8" WOOD

WIDTH TO:	24	28	32	36	42	48	54	60	66	72	78
HEIGHT TO:											
30	5	6	7	8	9	10	11	13	14	15	16
36	6	7	8	9	11	12	14	15	17	18	20
42	7	8	9	11	12	14	16	18	19	21	23
48	8	9	11	12	14	16	18	20	22	24	26
54	9	11	12	14	16	18	20	23	25	27	29
61	10	12	14	15	18	20	23	25	28	31	33
66	11	13	15	17	19	22	25	28	30	33	36
73	12	14	16	18	21	24	27	30	33	37	40
78	13	15	17	20	23	26	29	33	36	39	42
84	14	16	19	21	25	28	32	35	39	42	N/A

Max Square Footage 45

CONTROL CHARTS – CORDLESS XL

CONTROLS

- Plastic tilt wands are **color coordinated** with slats
- Chart shows standard lengths.
- **LIFT** function is controlled from the bottom rail

Wand Length	Blind Height
12"	12" to 24"
20"	24 1/8" to 36"
24"	36 1/8" to 48"
36"	48 1/8" to 72"
48"	72 1/8" to 84"

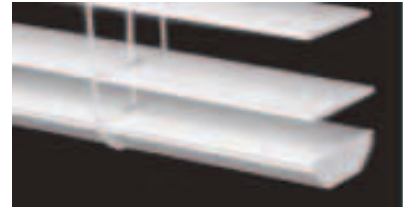
No additional wand sizes available.

BOTTOMRAIL – CORDLESS XL LIFT

- 2" Trapezoid bottomrails are standard on wood blinds with **cordless xl lift**
- **Wood** bottomrail is standard for 2"
- **Faux** bottomrail is standard for 2-3/8"

The "trapezoid" bottomrail provides a contoured, modern look along with improved blind operation (slat tilting & rotating).

Trapezoid Bottomrail



LADDER PLACEMENT CHARTS

The following charts show the number of ladders and routes based on the NET width of the blind.

2" & 2-3/8" Wood		
Blind Width	# of Ladders	# of Routes
8" to 30"	2	2
30-1/8" to 42"	3	2
42-1/8" to 60"	3	3
60-1/8" to 84"	4	4

2" & 2-3/8" Wood		
Blind Width	End Routes	Tilter Route
8" to 11-7/8"	2.5"	Centered
12" to 18"	4"	1.5"
18-1/8" to 84"	6"	1.5"

**The tilter route is from the end of the headrail

STACK-UP CHART (APPROXIMATE)

The following charts show the stacking height of the slats when the blind is fully raised. **Add in HR+BR for total.**

2" WOOD	
Blind Height	Stack Height
48"	4"
60"	5"
72"	6"
84"	7"

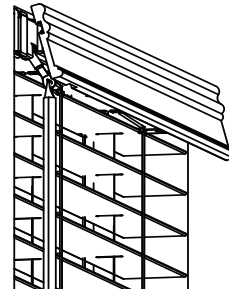
2-3/8" WOOD	
Blind Height	Stack Height
48"	3 1/8"
60"	3 7/8"
72"	4 5/8"
84"	5 3/8"

PLUS + 2-1/2"

PLUS + 2-1/2"

** Some blinds approximately 70" and longer may have one or two additional slats resting on the BR in the down position.

VALANCE



- All valance profiles ordered over 2-3/8" Cordless XL will be notched for better clearance.

SQUARE FOOTAGE SPECIFICATIONS

2" & 2-3/8" Wood												
WIDTH TO:	24	28	32	36	42	48	54	60	66	72	78	84
HEIGHT TO:												
30	5	6	7	8	9	10	11	13	14	15	16	18
36	6	7	8	9	11	12	14	15	17	18	20	21
42	7	8	9	11	12	14	16	18	19	21	23	25
48	8	9	11	12	14	16	18	20	22	24	26	28
54	9	11	12	14	16	18	20	23	25	27	29	32
61	10	12	14	15	18	20	23	25	28	31	33	36
66	11	13	15	17	19	22	25	28	30	33	36	39
73	12	14	16	18	21	24	27	30	33	37	40	N/A
78	13	15	17	20	23	26	29	33	36	39	N/A	N/A
84	14	16	19	21	25	28	32	35	39	N/A	N/A	N/A

Max Square Footage 40

CONTROL CHARTS – BLISS AND SOMFY MOTOR SYSTEM

CONTROLS

- Tilt cords are **color coordinated** with slats
- Standard tilt cord lengths are 40% of the blind height as required by child safety standards. Customized lengths are available upon request.
 - For 2" blinds, minimum cord length is 10". For blinds under 15" in height, a cord length override to at least 10" must be requested.
 - For 2-3/8" blinds, minimum cord length is 10". For blinds under 24-3/4" in height, a cord length override to at least 10" must be requested.
- **LIFT** function is controlled from the bottom rail

TILT CONTROL POSITIONS - LEFT ONLY

Tilt Wand (Standard), Tilt Cords (Optional) or Motorization (Optional)

Min. Width
18"
20" with Motorized Tilt

LADDER PLACEMENT CHARTS

The following charts show the number of ladders and routes based on the NET width of the blind.

2" WOOD		
Blind Width	# of Ladders	# of Routes
18" - 38-1/8"	2	2
38-1/4" - 60-1/8"	3	2
60-1/4" - 78"	4	4

2-3/8" WOOD		
Blind Width	# of Ladders	# of Routes
18" - 36"	2	2
36-1/8" - 60-1/8"	3	2
60-1/4" - 78"	4	4

**Routes are positioned approximately 6 1/4" from the end of the slat for blinds less than 38 1/4" wide, and 8 1/4" from the end of the slat for all others, and 6-5/8" for blinds with motorization

STACK-UP CHART (APPROXIMATE)

The following charts show the stacking height of the slats when the blind is fully raised. **Add in HR+BR for total.**

- *Headrail+Bottomrail = 2-1/2"*

2" WOOD	
Blind Height	Stack Height
48"	4"
60"	5"
72"	6"
84"	7"

2-3/8" WOOD	
Blind Height	Stack Height
48"	3 1/8"
60"	3 7/8"
72"	4 5/8"
84"	5 3/8"

PLUS	2-1/2"
-------------	---------------

PLUS	2-1/2"
-------------	---------------

CONTROL CHARTS – CORDLESS LIFT & LOCK SYSTEM

TILT WAND (STANDARD)

- Tilt wands are **color-coordinated** with slats
- Chart shows standard lengths.
- Tilt Length Override – specify length when ordering

2" & 2-3/8" WOOD	
Wand Length	Blind Height
12"	12" to 24"
20"	24 1/8" to 36"
24"	36 1/8" to 48"
36"	48 1/8" to 72"
48"	72 1/8" to 96"



Wood Wands up to 48" long. Clear plastic in 60", 72" or 84". Wand length optional. Specify optional lengths when ordering.

TILT CORD (OPTIONAL)

- Cords are **color-coordinated** with slats
- Standard tilt cord lengths are 40% of the blind height as required by child safety standards. Customized lengths are available upon request.
 - For 2" blinds, minimum cord length is 10". For blinds under 15" in height, a cord length override to at least 10" must be requested.
 - For 2-3/8" blinds, minimum cord length is 10". For blinds under 24-

- For cordless **Lift & Lock** the lift function is controlled by the bottomrail

CONTROL POSITIONS:

- Tilt Cord center ONLY
- Tilt Left or Right ONLY

Min. Width (NET)

10-1/2" to 12-3/8"
12-1/2" and more

LADDER PLACEMENT CHART

The chart shows the number of ladders and routes based on the NET width of the blind.

2" & 2-3/8" WOOD		
Blind Width	# of Ladders	# of Routes
10-1/2" - 36"	2	2
36-1/8" - 56"	3	2
56-1/8" - 78"	4	4
78 1/8" - 96"	5	4

**Routes are positioned approximately 2 1/2" from the end of the slat for blinds less than 12 1/2" wide, 3" from the end of the slat for blinds less than 19 3/4" wide, and 6" from the end of the slat for all others.

STACK-UP CHART (APPROXIMATE)

- Headrail+Bottomrail = 2-1/2"

The charts show the stacking height of the slats when the blind is fully raised. Add in HR+BR for total.

2" WOOD	
Blind Height	Stack Height
48"	4"
60"	5"
72"	6"
84"	7"

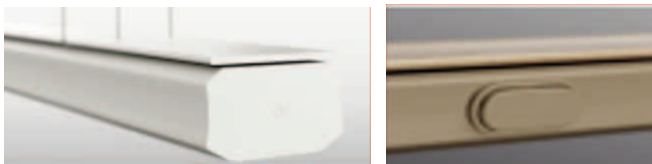
2-3/8" WOOD	
Blind Height	Stack Height
48"	3 1/8"
60"	3 7/8"
72"	4 5/8"
84"	5 3/8"

PLUS 2-1/2"

PLUS 2-1/2"

BOTTOMRAIL – CORDLESS LIFT & LOCK™

- A **2" deep by 1" tall faux bottomrail** is standard
- Bottom rail colors are pre-selected. Color matched to slat color. Hardware override is not available
- Color coordinated end caps



SQUARE FOOTAGE SPECIFICATIONS

2" WOOD

TO:	24	28	32	36	42	48	54	60	66	72	78	84	90	96
30	5	6	7	8	9	10	11	13	14	15	16	18	19	20
36	6	7	8	9	11	12	14	15	17	18	20	21	23	24
42	7	8	9	11	12	14	16	18	19	21	23	25	26	28
48	8	9	11	12	14	16	18	20	22	24	26	28	30	32
54	9	11	12	14	16	18	20	23	25	27	29	32	34	36
61	10	12	14	15	18	20	23	25	28	31	33	36	38	41
66	11	13	15	17	19	22	25	28	30	33	36	39	41	44
73	12	14	16	18	21	24	27	30	33	37	40	43	N/A	N/A
78	13	15	17	20	23	26	29	33	36	39	42	N/A	N/A	N/A
84	14	16	19	21	25	28	32	35	39	42	N/A	N/A	N/A	N/A

Max Square Footage 45

2-3/8" WOOD

TO:	24	28	32	36	42	48	54	60	66	72	78	84	90	96
30	5	6	7	8	9	10	11	13	14	15	16	18	19	20
36	6	7	8	9	11	12	14	15	17	18	20	21	23	24
42	7	8	9	11	12	14	16	18	19	21	23	25	26	28
48	8	9	11	12	14	16	18	20	22	24	26	28	30	32
54	9	11	12	14	16	18	20	23	25	27	29	32	34	36
61	10	12	14	15	18	20	23	25	28	31	33	36	38	41
66	11	13	15	17	19	22	25	28	30	33	36	39	41	44
73	12	14	16	18	21	24	27	30	33	37	40	43	46	49
78	13	15	17	20	23	26	29	33	36	39	42	46	49	N/A
84	14	16	19	21	25	28	32	35	39	42	46	49	N/A	N/A

Max Square Footage 50