

# CLASSIC COLLECTION™

Genuine Value  
Retail Sales Guide



**Distributed by:**

April 15, 2024

Updated 5/1/24

Aluminum Blinds

**MDS**  
WINDOW FASHIONS  
Midwest  
Designer  
Supply

[www.midwestdesignersupply.com](http://www.midwestdesignersupply.com)

888-523-2611

262-524-1007 (fax)

Custom Crafted in the U.S.A.



AMERICAN QUALITY CUSTOM | SINCE 1950

# CHILD SAFETY

It's your first priority, but child and pet safety is often the last thing you think about when choosing window coverings. Did you know that the most common window products in homes are not child safe? Those horizontal blinds that were there when you moved in are a potential strangulation hazard for your little ones. As our infographic shows, accidents still happen with those long cords.



## BEST FOR KIDS™ CERTIFICATION PROGRAM

The Best for Kids™ certification label makes it easy for parents and caregivers to identify products that are best suited for their home.

To become certified, Lafayette Interior Fashions must meet the specified program criteria and submit their window covering products to a designated third party testing laboratory. To pass the tests, the products may not have:

- operating cords
- inner cords that are accessible
- cords that create a hazardous loop or potential wrap-around hazard



## ADDITIONAL SAFETY MEASURES

The window covering industry uses warning tags, labels, and other methods to communicate potential hazards. The warning shown here communicates the important message that cords are a potential strangulation hazard and suggests choosing cordless or inaccessible-cord alternatives. Together with the Window Covering Safety Council, we encourage you to install only cordless window coverings in rooms where children play and sleep.



For kids' sake, we offer a wide array of lifting system options, from cordless and motorized operating systems to retractable lift cords, cord tensioners, and wand controls for enhanced child safety.

All Lafayette products that utilize a clutch system are sent with a Cord Tension Lock. The Cord Tension Lock must be secured to the wall to provide the necessary tension for the shade to operate.

All **motorized** window treatment products offer child safe operation since the motor unit provides the mechanism for raising and lowering the shade.

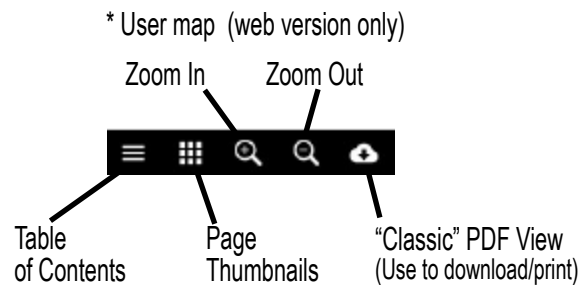
For additional window treatment child safety information, please visit the Window Covering Safety Council ([www.windowcoverings.org](http://www.windowcoverings.org)).

TABLE OF CONTENTS		
SPECIFICATION CHARTS	PRICING	PRODUCT INFORMATION
<p><b>Color Listing</b></p> <p><b>Product &amp; Price Chart Matrix</b></p> <p><b>Size Standards</b> Metro</p> <p><b>Design Options</b> Metro Options Chart</p> <p><b>Finished Dimensions &amp; Mounting Requirements</b> Stacking Heights</p>	<p>Chart 1 - Metro 2" w/ Lift &amp; Lock Chart 2 - Metro 2" w/ Lift &amp; Lock - Special Colors Chart 3 - Metro 2" w/ Accu-Rise Chart 4 - Metro 2" w/ Accu-Rise - Special Colors</p> <p><b>Design Options Surcharges</b></p> <p><b>Motorization Surcharges</b></p>	<p>Metro 2" w/ Lift &amp; Lock Metro 2" w/ Accu-Rise Auto-Tilt</p> <p><b>Design Options</b></p> <p><b>Measuring &amp; Installation</b></p> <p><b>LAFAYETTE WARRANTY</b></p>

- Please examine all merchandise and packages for accuracy and make sure all parts, brackets, etc. are included before sending them to be installed. While we constantly strive to make sure each order is exact and complete, we do occasionally make mistakes, and we cannot be responsible for trip charges or reinstallation charges. **Repairs or remakes must be requested within 30 days of invoice date.**

\* Use the Previous button to return to your previous view (web version only)

\* Use the Index button to return to the Table of Contents



# Color Listing

Superior 2" Slat (Metro)		Decorative Tape (2" Metro w/ Lift & Lock)	
Color Name	Color #	Color Name	Color #
Buff	4582	Almond	830
Front Porch	4561	Antique White	973
Metallic Ash	4109	Black	048
Navajo	4668	Earth	0312
Nickel	4850	Pewter	932
Noir	4940	Sable	378
Polished Slate	4717	Taupe	302
Sandstone	4110	White	450
Sea Salt	4698		
Smokey Gray	3620		
Sugar	4100		
Waterlily	4672		

## Price Chart Matrix

Product Name	Slat Size	Slat Gauge	Slat Spacing	Price Chart
Metro 2" with Lift & Lock	2"	Superior .008	42 mm	<a href="#">Price Chart 1 or 2 *</a>
Metro 2" with Accu-Rise	2"	Superior .008	42mm	<a href="#">Price Chart 3 or 4 *</a>

\* This product type has more than one price chart due to the color selection. Special colors are priced on a higher price chart.

## Size Standards

	Metro 2" Lift & Lock	Metro 2" Accu-Rise	Auto-Tilt 2"
Minimum Ordered Width	12"	18"	18"
Maximum Ordered Width	96"	90"	96"
Minimum Ordered Height	12"	12"	12"
Maximum Ordered Height	72"	84"	96"
Maximum Area (sq.ft.)	48	52	64

## Design Options

2" Metro Blinds	2" Metro Lift & Lock	2" Metro Accu-Rise	2" Metro Auto-Tilt
<b>No Charge Options</b>			
Extension Bracket	Y	Y	Y
Hold Down Bracket	Y	Y	Y
Spacer Blocks	Y	Y	Y
Valance - Single Slat Clip On	Y	Y	Y
Wand Tilt	Std	Std	N/A
Accu-Rise	N/A	Y	N/A
Lift & Lock	Y	N/A	Y
<b>Surcharge Options</b>			
Cloth Tapes	Y	N/A	Y
Motorization - Auto-Tilt	Y	N/A	Y
Multi Color Blinds	Y	Y	Y

# Finished Dimensions & Mounting Requirements

	Finished Dimensions (All finished dimensions are based on ordered height or width)						Mounting Requirements			
	Inside Mount			Outside Mount			Inside Mount		Outside Mount	
	Headrail Width	Slat Width	Blind Height	Headrail Width	Slat Width	Blind Height	Minimum Mounting Depth	Flush Mount	Minimum Flat Vertical Surface	Recommended Width Overlap Per Side
Metro 2" Lift & Lock	-3/4"	-1/2"	Ordered Height	-1/4" *	Ordered Width	Ordered Height	See note below***		1 3/4"	1 1/2"
Metro 2" Accu-Rise	-3/4" **	-1/2"	Ordered Height	-1/4" *	Ordered Width	Ordered Height	See note below***		1 3/4"	1 1/2"
Auto-Tilt	-1/2"	-1/2"	Ordered Height	Ordered Width	Ordered Width	Ordered Height	1 1/2"	2 1/2"	1 9/16"	1 1/2"
* Valance Width +1      ** Valance Width -1/8"      *** Minimum Casement Depth, Bracket attachment: 1 1/8" Minimum Mounting Depth, fully recessed with valance: 3 3/8" (Lift & Lock) Minimum Mounting Depth, fully recessed with valance: 3 1/4" (Accu-Rise)										

## Stacking Heights

Window Length	Metro 2" w/ Lift & Lock		Metro 2" w/ Accu-Rise
	2" Metro Cable Tape	2" Metro Cloth Tape	Stacking Height
36"	4 7/8"	5 3/8"	4 1/2"
48"	5 1/8"	5 3/4"	4 3/4"
60"	5 3/8"	6 1/8"	5"
72"	5 5/8"	6 3/8"	5 1/4"
84"	---	---	5 1/2"
*Stacking charts are approximate and include headrail and bottom rail measurements. If decorative tapes are used, the stacking height shown will increase 20-30% based on the stiffness of the ladder.			

# Pricing

Chart 1		Metro 2" w/ Lift & Lock														
		Blind Width Up To:														
		12"	24"	28"	32"	36"	40"	44"	48"	52"	57"	62"	67"	72"	82"	96"
Blind Height Up To:	42"	225	232	240	253	273	284	313	317	336	353	373	390	413	448	494
	48"	232	236	253	271	292	311	332	342	363	384	403	425	448	488	534
	54"	244	248	271	284	313	328	359	365	390	411	434	461	484	530	584
	60"	263	267	282	309	330	350	382	390	413	438	467	488	521	569	628
	66"	273	278	303	321	350	369	403	413	442	471	498	523	559	613	671
	72"	288	292	317	342	369	394	428	438	469	500	528	559	590	650	717

Chart 2		SPECIAL COLORS - Metro 2" w/ Lift & Lock														
		Blind Width Up To:														
		12"	24"	28"	32"	36"	40"	44"	48"	52"	57"	62"	67"	72"	82"	96"
Blind Height Up To:	42"	269	273	292	309	328	346	373	380	400	423	442	467	488	530	580
	48"	284	292	311	325	348	367	396	403	430	448	473	500	523	569	623
	54"	296	305	325	346	369	390	423	432	457	478	509	530	561	613	667
	60"	313	319	344	365	390	411	442	461	480	511	534	565	596	650	713
	66"	325	332	361	382	411	434	469	480	511	540	567	598	632	688	757
	72"	344	350	375	400	432	461	494	509	534	567	598	632	669	734	798

Chart 3		Metro 2" w/ Accu-Rise														
		Blind Width Up To:														
		24"	28"	32"	36"	40"	44"	48"	52"	57"	62"	67"	72"	82"	90"	
Blind Height Up To:	42"	342	350	359	390	396	405	419	446	461	473	482	515	540	584	
	48"	348	355	365	396	411	419	432	461	475	484	500	536	555	600	
	54"	353	363	380	411	419	432	440	475	486	500	513	548	578	628	
	60"	361	378	386	419	432	440	448	484	500	515	534	565	594	642	
	66"	365	384	392	428	440	448	467	500	513	534	544	582	609	665	
	72"	380	390	400	438	446	465	478	511	530	544	559	596	632	684	
	78"	384	394	411	446	461	475	486	523	542	555	578	615	650	705	
	84"	390	403	419	450	473	484	500	538	553	573	592	632	667	725	

Chart 4		SPECIAL COLORS (Metro 2" w/ Accu-Rise)														
		Blind Width Up To:														
		24"	28"	32"	36"	40"	44"	48"	52"	57"	62"	67"	72"	82"	90"	
Blind Height Up To:	42"	388	396	411	440	450	467	478	507	523	540	553	586	617	667	
	48"	394	411	425	450	469	480	496	523	542	555	578	609	642	696	
	54"	403	423	436	467	482	498	511	544	559	582	596	634	671	723	
	60"	417	432	446	480	498	511	530	559	582	598	623	657	696	753	
	66"	425	440	457	496	511	530	544	580	598	623	638	678	721	784	
	72"	436	448	469	505	523	542	555	594	617	638	661	703	746	805	
	78"	444	465	482	517	540	553	578	609	636	659	684	725	775	836	
	84"	448	475	496	534	550	573	592	632	657	682	705	746	796	863	

# Pricing

Options & Surcharges (add to base blind price)	
Palladian Shelf - Finished (Per Ft.)	<a href="#">View Common Surcharges</a>
Palladian Shelf - Unfinished (Per Ft.)	<a href="#">View Common Surcharges</a>
Light Gap Stop (Per Ft.)	<a href="#">View Common Surcharges</a>
Motorization	<a href="#">View Motorization Pricing</a>

Cloth Tape Surcharge	Width Up To:														
	12"	24"	28"	32"	36"	40"	44"	48"	52"	57"	62"	67"	72"	82"	96"
Cloth Tapes (Lift & Lock only)	28	36	48	63	75	92	111	123	136	150	167	184	203	223	246



## Product Features

- Fits rectangular window openings
- Color coordinated aluminum bottom rail with button
- Standard - Wand tilt left (L)

## Size Standards

## Hardware Included

- Installation Brackets

## Finished Dimensions & Mounting Requirements

## Options

- No Charge Options and Availability
- Surcharge Options and Availability
- Design Option Details
- Exclusions

## Control Options

- Optional - Wand tilt right (R)

## Wand Lengths

- Wands are available in 12", 20", 30", 48" and 60".
- Wands are finished to coordinate with the slat color.

## Ladder & Cloth Tape Chart

Number of Ladders	Finished Width
2 each	Up to 31"
3 each	31 1/16" to 59"
4 each	59 1/16" to 86"
5 each	86 1/16" to 96"

## Lift & Lock Operation

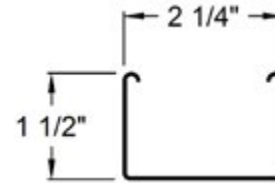
**To raise the blind:** Fully depress the button on the front of the bottom rail. Lift & Lock button **MUST STAY FULLY DEPRESSED** as you are lifting the blind. You can stop in any position by releasing the button. Operation may require the use of two hands to support the blind as you lift.

**To lower the blind:** Fully depress the Lift & Lock button on the front of the bottom rail. Keep button fully depressed while lowering until you reach the desired length.

**CAUTION:** If the Lift & Lock button is not fully depressed, operation is compromised and ratcheting noise will occur.

## Stacking Heights

## Pricing



Low Profile Headrail



Lift & Lock Bottom Rail End



Button on Bottom Rail

## Headrail and Bottom Rail

The low profile headrail is used with all cordless lift system blinds. Motors are enclosed in the bottom rail.



# Product Information - Accu-Rise for 2" Metro Aluminum Blinds



## Product Features

- Fits rectangular window openings
- Double Lock Seam Bottom Rail
- Standard - Wand tilt left (L)

## Size Standards

## Hardware Included

- Installation Brackets

## Finished Dimensions & Mounting Requirements

## Options

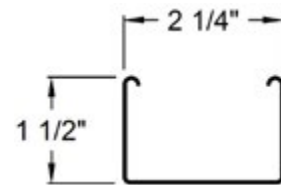
- No Charge Options and Availability
- Surcharge Options and Availability
- Design Option Details
- Exclusions

## Control Options

- Optional - Cord tilt left (R)

## Wand Lengths

- Wands: 12", 20", 30", 48" and 60"
- Wands are finished to coordinate with the slat color.



Low Profile Headrail

## Ladder Chart

Number of Ladders	Finished Width
2 each	Up to 46 1/4"
3 each	46 5/16" to 80 1/4"
4 each	80 5/16" to 90"

## Stacking Heights

## Pricing



## Product Features

- Available for 2" Metro Aluminum Blinds.
- Auto-Tilt 12 Volt single reloadable Battery Wand with Lithium batteries and mounting clips (required surcharge)
- Tilt control only.
- Motor can be on right or left side; lift cords are on opposite side.
- Headrail is color coordinated to blind as best possible.
- Double Lock Seam Bottom Rail
- Valance can be ordered separately.
- Available with Zigbee option



## Zigbee Systems

- Zigbee 3.0 from Somfy is a bi-directional smart shade ecosystem



## Size Standards

## Finished Dimensions & Mounting Requirements

### Options

- [No Charge Options and Availability](#)
- [Surcharge Options and Availability](#)
- [Design Option Details](#)
- [Exclusions](#)

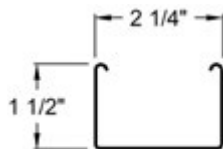
## Stacking Heights

### Ordering Notes

- Order Transmitter(s) or Wall Switch(s) as required.
- Check for other options required that are available.
- Choose left or right side for power cord and motor.
- Window length is required so that the limits can be set

### Headrail

- Utilize a low profile headrail .



## Pricing

- To price add [motorization surcharge](#) to base price

## Motorization Services

- Customer Service Motorization Skill Set  
> 800-342-5523  
> motor@lafvb.com
- Technical Support by trained Customer Service Agents
- Assistance in the specification of motorization applications
- Liason between dealers/designers, electricians and home automation integrators.

## Somfy TaHoma Overview

- 2.4Ghz WiFi connection(Not 5Ghz) or Ethernet
- Apple (iOS 8+) or Android (Lolipop 6.0+) compatible using the TaHoma North America App
- Join up to 10 TaHoma hubs together (RTS only) for multi-zone control
- Control up to 40 RTS channels per TaHoma
- Maximum of 40 scenes
- Maximum of 40 schedules
- Remote access
- Control4 Certified driver
- Compatible with Amazon Alexa, IFTTT & Google Assistant

## RTS Controls



Variation 5 Channel Remote



Situ 1 Channel Remote



Situ 5 Channel Remote



Sixteen Channel Telis RF Transmitter



Five Channel Decoflex Wall Switch

See the [Motorization Solutions Guide](#) for more controls and accessories.

# Design Options

## Valances

- A single slat clip on valance is used for Metro 2" blinds.
- Valances ordered with inside mount blinds will be equal to the width ordered.
- Valances ordered with outside mount blinds will be equal to the width ordered plus five inches (additional allowance made for extension brackets and returns).



Single slat clip-on valance

## Cloth Tapes

- Cloth tape is available on 2" Metro blinds (Lift & Lock only). See [Materials Library](#) for cloth tape selection.
- Blinds with cloth tapes will need to hang in the window for a few days to allow the cloth tape to relax so the blind does not appear too short.

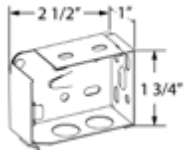
## Light Gap Stop

- Blocks light gap for blinds inside mounted in rectangular openings.
- Comes with self adhesive tape attached for installation.
- Projection is 1 5/8".
- Ordered by lineal foot.
- Made of PVC and available in 5 colors: Black, Bronze, Grey, Vanilla and White



# Measuring & Installation Information

## Brackets



Metro 2" Bracket  
50-03-047-XXX

Extension Bracket-Short 50-03-167  
Extension Bracket - Long 50-03-168

	Blind Width	# of Brackets	
		Under 60 sq. ft.	60 sq. ft and Over
<b>Support Brackets</b>			
Metro 2" Lift & Lock	72 1/16" to 96"	1	
Metro 2" Accu-Rise	72 1/16" to 90"	1	

## Palladian Window Shelf

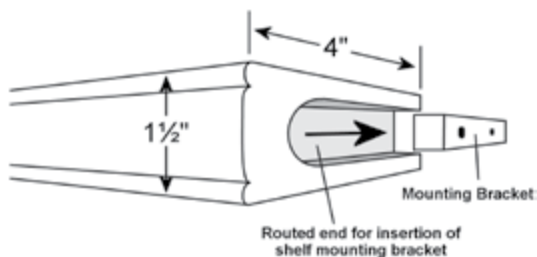
- Double beaded hardwood shelf designed to mount horizontally in arched or angled openings to serve as divider and mounting surface for any window fashions product
- Allows area above shelf to be covered differently or uncovered
- Finishes available from Woodland Harvest or Heartland Woods
- Palladian shelf has a 1/32" per foot tolerance for warpage
- Inside Mount Applications only

## Size Standards

- Height: 1 1/2"
- Depth: 4" (Can be cut down to 2" minimum upon request)
- Maximum Length: 8'

## Ordering Notes

- Must be installed below the radius of window as routed ends are square
- Specify exact width from jamb to jamb. A 1/16" deduction will be taken by Lafayette
- Ordered separate from shades or blinds (Priced by lineal foot - round up from exact width to next highest lineal foot)
- Exclusions: Outside mount applications



## Best Practices for Measuring

- Always use a steel tape or a metal ruler for measuring.
- Always measure every window even though they look the same.
- Check for obstructions that could affect operation of the blind.
- For Inside Mount (jamb to jamb in a window or door, wall to wall in a room), give exact inside to inside width measurements, and top to bottom length measurements of the area to be covered.
- Measure the width in at least three places and specify the narrowest width.
- Measure the length in at least three places and specify the shortest length.
- Take two diagonal measurements. If there is a greater than 3/8" difference in diagonal measurements, outside mount is strongly recommended to avoid irregular light gaps.
- For Outside Mount, measure the exact width and height of the area to be covered.

## Measuring for Aluminum Blinds

- All blind pricing is based on the width and the window opening height. Orders are accepted for inside or outside dimensions, to the nearest 1/16".
- For an Inside Mount, measure the exact width between the jambs (inside) where the blind is to be mounted.
- For an Outside Mount, we recommend that the brackets be placed to allow a minimum of 1 1/2" to 2" overlap on each side of the casement. Measure between the point where the brackets are to be placed and specify that as an outside width. When using a valance, the outside dimension of the valance will be greater than the outside measurement.
- For Length, measure the full length of the window opening from the top frame to the lower sill to determine your window length.

## Care and Cleaning

- Dusting - Regular dusting maintains a like new appearance of aluminum blinds.
- Vacuuming - For deeper cleaning, vacuum gently with a brush attachment of any vacuum cleaner.
- Compressed Air or Hair Dryer (non-heat setting) - Use to blow dust off blinds.
- Spot-Cleaning - Spot clean blinds with soft cloth or sponge moistened with lukewarm water. Add mild detergent if needed. Blot gently.
- Bathtub Cleaning/Water Immersion - This method may be used on all aluminum blinds (exception: motorized blinds).
  1. Immerse entire blind assembly in lukewarm water with mild detergent. Wash for five minutes by gently moving liquid around with your fingers.
  2. Rinse with clear water.
  3. Close blind before removing from rinse water.
  4. Hold rails and tilt the blind to allow excess water to drain off.
  5. Re-install damp blind into window opening.
  6. Lower blind all the way to allow it to dry completely.

# LAFAYETTE INTERIOR FASHIONS™

## LIFETIME LIMITED WARRANTY

Since 1950, LAFAYETTE INTERIOR FASHIONS has consistently held a high standard of quality for both products and service, ensuring you find the perfect, custom crafted window treatments. The Lafayette Limited Lifetime Warranty represents a dedication to your complete satisfaction.

### COVERED BY THE WARRANTY

- Lafayette Interior Fashions products are covered for defects in materials or workmanship for as long as the original purchaser owns the product (exceptions are noted below).
- All internal mechanisms, components, and brackets.
- Motorization systems (excluding batteries) are covered for 5 years.
- Interior Masterpieces and Sheer Visions fabrics are covered for 3 years.
- Heartland wood blinds finish is covered for 3 years.
- Operational cords are covered for 7 years from the date of purchase.

### NOT COVERED BY THE WARRANTY

- Any conditions caused by normal wear and tear.
- Abuse, accidents, alterations, misuse.
- Damage including but not limited to discoloration, fading, cracking, warping, shrinking, or stretching caused by exposure to the elements (sun, condensation, excessive humidity, wind)
- Failure to follow our instructions for measurement, proper installation, use, cleaning, or maintenance.
- Slight color variation; natural variations in color, grain, or weave of natural materials
- Any customer supplied fabric
- Shipping, removal, re-measuring, or reinstallation costs

### TO OBTAIN WARRANTY SERVICE

Contact your original dealer (place of purchase) for warranty assistance. Lafayette Interior Fashions will promptly repair or replace the product or components found to be defective. Warranty claims must be accompanied by proof of purchase.

It is at the sole discretion of Lafayette Interior Fashions to determine whether product will be repaired or replaced. Repairs and or replacements will be made with like or similar parts or products.

**Note:** In no event shall Lafayette Interior Fashions be liable or responsible for incidental or consequential damages or for any other indirect damage, loss, cost, or expense. Some states do not allow the exclusion or limitation of incidental or consequential damages, so the above exclusion or limitation may not apply to you. This warranty gives you specific legal rights, and you may also have other rights which vary from state to state.

THIS WARRANTY IS EXCLUSIVE AND IN LIEU OF ALL OTHER WRITTEN OR ORAL WARRANTIES OR OBLIGATIONS AND LIABILITIES. THE DURATION OF ANY IMPLIED WARRANTIES FOR ANY PRODUCT IS LIMITED IN DURATION TO THE WARRANTY TERM APPLICABLE TO SUCH PRODUCT AS SET FORTH ABOVE.

# LAFAYETTE INTERIOR FASHIONS™

## Product Offering

### BLINDS



Classic Collection™  
Aluminum Blinds



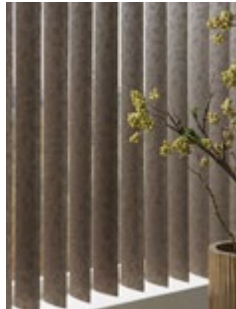
Heartland Woods®  
Wood Blinds



Fidelis®  
Faux Wood Blinds



Wonderwood®  
Faux Wood Blinds



Discoveries®  
Vertical Blinds

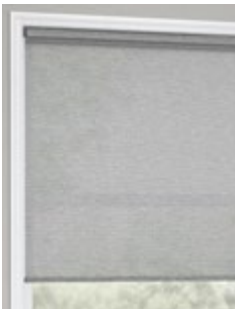


Sheer Visions®  
Vertical Blinds

### SHADES



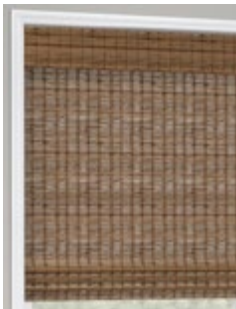
Allure®  
Transitional Shades



Genesis®  
Custom Shades



Genesis®  
Panel Track



Manh Truc®  
Woven Wood Shades



Parasol®  
Cellular Shades



Tenera®  
Sheer Shadings





Midwest  
Designer  
Supply

**1-888-523-2611**

**Midwest Designer Supply, Inc.  
N30W22377 Green Road Ste C  
Waukesha, WI 53186  
(262) 523-2600  
Fax (262) 524-1007  
[www.midwestdesignersupply.com](http://www.midwestdesignersupply.com)**

*MDS - your one source for window fashions.*